

# Factsheet: Namibia

Last update: 21 April 2014

## DEFINITION OF YOUTH

According to [The Namibian](#), the revised national youth policy defines youth as individuals between 16-30 years.

### CANDIDACY AGE

**Lower House** **21**

Source: [Inter-Parliamentary Union](#) Partially appointed.

**Upper House** **21**

Source: [Inter-Parliamentary Union](#) Entirely indirectly elected

### MARRIAGEABLE AGE

	Without Parental Consent	Opposite Sex With Parental Consent	Same Sex
Male	21	18	XX
Female	21	18	XX

Male homosexual acts are illegal, while female homosexual acts are legal. Source: [UNSD, ILGA](#)

### VOTING AGE

**18**

Source: [Inter-Parliamentary Union](#)

### MAJORITY AGE

**21**

Source: [Draft Child Care Protection Bill - With Proposed Amendments \(2011\)](#)

### CRIMINAL RESPONSIBILITY

**7**

**Minimum Age**  
From 7-13 years old, the state must prove criminal capacity. A child below 7 cannot be held legally responsible for their actions. Source: [UNICEF \(2013\)](#)

## SITUATION OF YOUNG PEOPLE

### YOUTH DEVELOPMENT INDEX

**0.49**

121 out of 170 countries.

Year: 2013

Source: [Commonwealth Youth Programme](#)

### LITERACY RATES

**89.91%**

Both sexes (15-24) %

**86.45%** **93.34%**

Male (15-24) % Female (15-24) %

Year: 2015

Source: [UNESCO](#)

### NET ENROLMENT RATE

Secondary School

**51.31%**

Both sexes %

**45.08%** **57.48%**

Male % Female %

Year: 2007

Source: [UNESCO](#)

### GDP PER CAPITA

**USD 5693.13**

Year: 2013

Source: [World Bank](#)

### HDI

**0.608**

Year: 2013

Source: [UNDP](#)  
127 out of 187 countries.

### GINI

**61.32**

Year: 2010

Source: [World Bank](#)

### CORRUPTION PERCEPTION

**49**

55 out of 177 countries.

Year: 2014

Source: [Transparency International](#)

### PRESS FREEDOM

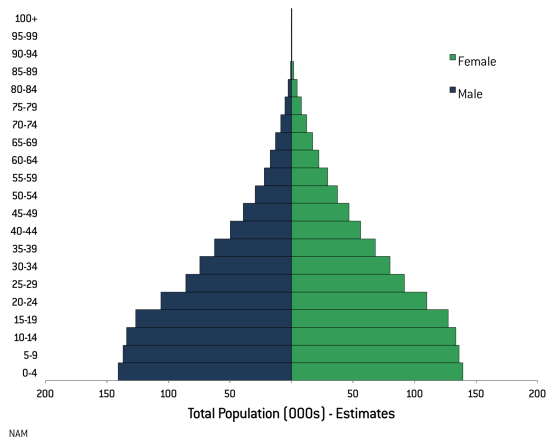
**12.5**

22 out of 180 countries.

Year: 2013

Source: [Reporters Without Borders](#)

## POPULATION BY AGE AND SEX 2010

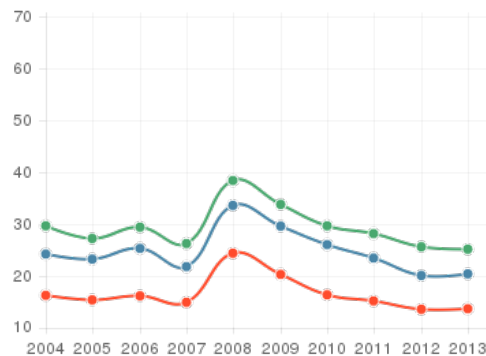


Source: [United Nations - Department of Economic and Social Affairs - Population Division](#)

2012 Revision - Estimates. (Accessed August 2013).

## YOUTH UNEMPLOYMENT

### Share of labour force aged 15-24 available and seeking employment



male - (15-24) female - (15-24) total labour force

Source: [World Bank](#)

Gaps indicate missing data from the original data source. (Accessed August 2013).

## SITUATION OF YOUNG PEOPLE

### PREVALENCE OF HIV

**2.7%**

Male (15-24) %

**4.8%**

Female (15-24) %

Year: 2013

Source: [World Bank](#)

### TOBACCO USE

Consumed any smokeless or smoking tobacco product at least once 30 days prior to the survey.

**31.10%**

Both sexes (13-15) %

**31.90%** **29.90%**

Male (13-15) % Female (13-15) %

Year: 2010

Source: [WHO](#)

## POLICY & LEGISLATION

According to [Innovations in Civic Participation – Namibia](#), the national youth policy was first created in 1993. [The Namibian](#) reported that this was revised in 2006, "based on human rights and social justice." The revised policy, "emphasis[ed] employment creation, financial support for young entrepreneurs and access to agricultural land" as well as including citizenship, disability rights, peace, security, education, environment, and reproductive health. In 2012, [New Era](#) reported that the [National Youth Council of Namibia](#) was reviewing the national youth policy (2006). The [National Youth Service](#) provides "skills training and personal development programmes to the youth" over a minimum of three months. Additionally the [Namibia Youth Credit Scheme](#) offers micro credit.

### Is there a national youth policy?

**YES**

The national youth policy of Namibia is from 2006, and there is a [push to review it soon](#).

## PUBLIC INSTITUTIONS

What is the budget allocated to the governmental authority (ministry, department or office) that is primarily responsible for youth and/or

The Directorate of Youth within the Ministry of Youth, National Services, Sport & Culture has responsibility for youth affairs. It aims to:

empower, encourage, and support the full effective and constructive participation of youth in the process of national decision making in accordance with the United Nations World Program of Action for Youth from the year 2000 and beyond.

It delivers programmes on health, employment, training and development, volunteering, rural development, gender, participation and environmental education.

#### YOUTH AND REPRESENTATION

The National Youth Council of Namibia (NYCN) is an umbrella organisation with affiliated youth NGOs. It seeks to "address the challenges, opportunities and obstacles facing young people in Namibia." One of its key functions is to "liaise, and advise the Ministry responsible for youth affairs on youth matters." The National Youth Council Act 3 of 2009 provides the legal basis for the NYCN and the establishment of 13 regional youth forums. The NYCN is a member of The Commonwealth Youth Council.

#### BUDGET & SPENDING

According to the Estimates of Revenue and Expenditure 2013-2016, the total estimated budget for youth affairs within the Ministry of Youth, National Services, Sport & Culture for 2013-2014 was NAD 440 million (USD 39.8 million). According to the World Bank, Namibia spent 22.40% of its government expenditure on education provision in 2008, and 8.37% of its GDP in 2010.

Is there a governmental authority (ministry, department or office) that is primarily responsible for youth?

**YES**

Does the country have a national youth organisation / association (council, platform, body)?

**YES**

What is the budget allocated to the governmental authority (ministry, department or office) that is primarily responsible for youth and/or youth programming?

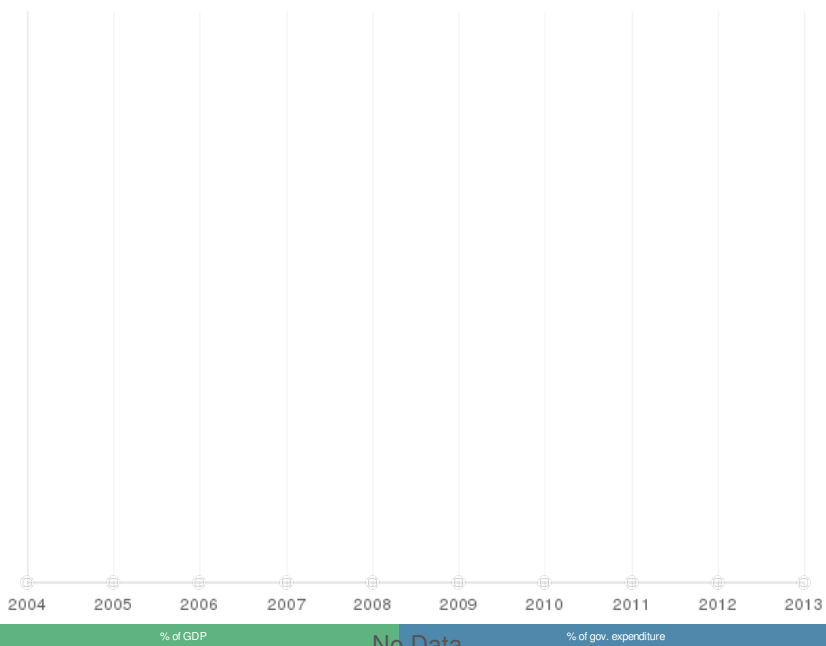
**NAD 440 MILLION**  
**USD 39.8 MILLION**

youth programming?

**NAD 440 MILLION**  
**USD 39.8 MILLION**

According to the Estimates of Revenue and Expenditure 2013-2016, the total estimated budget for youth affairs within the Ministry of Youth, National Services, Sport & Culture for 2013-2014 was NAD 440 million (USD 39.8 million). According to the World Bank, Namibia spent 22.40% of its government expenditure on education provision in 2008, and 8.37% of its GDP in 2010.

#### TOTAL EXPENDITURE ON EDUCATION AS A PERCENTAGE OF GOVERNMENT SPENDING AND GDP



Source: World Bank  
Gaps indicate missing data from the original data source. (Accessed August 2013).

#### TOTAL EXPENDITURE ON EDUCATION AS A PERCENTAGE OF GOVERNMENT SPENDING AND GDP

No Data

% of GDP % of gov. expenditure

Source: World Bank  
Gaps indicate missing data from the original data source. (Accessed August 2013).

#### PUBLICATIONS AND REVIEWS

Visit our library for further reading:  
Documents about Namibia