

Factsheet: Luxembourg

Last update: 10 April 2014

DEFINITION OF YOUTH

The **Youth Law (2008)** of Luxembourg defines youth as between 12-30 years.

CANDIDACY AGE

Lower House **18**

Source: [Inter-Parliamentary Union](#)

Upper House **--**

Source: [Inter-Parliamentary Union](#)
Unicameral.

MARRIAGEABLE AGE

	Without Parental Consent	Opposite Sex With Parental Consent	Same Sex With Parental Consent
Male	18	--	++
Female	16	--	++

No data for marriage with parental consent. Civil unions/partnerships legal. Source: [UNSD](#), [ILGA](#)

VOTING AGE

18

Compulsory voting.
Source: [Inter-Parliamentary Union](#)

MAJORITY AGE

18

Source: [Civil Code - Title 10: Minority, Guardianship and Emancipation \(1975\)](#)

CRIMINAL RESPONSIBILITY

18

Minimum Age
Minors may be given supervision, educational or correctional punishments through the juvenile court. Source: [Youth Protection Law of Luxembourg \(1992\)](#)

SITUATION OF YOUNG PEOPLE

YOUTH DEVELOPMENT INDEX

--

--

Year: No data.

Source: [Commonwealth Youth Programme](#)

LITERACY RATES

--

Both sexes (15-24) %

-- --
Male (15-24) % Female (15-24) %

Year: No data.

Source: [UNESCO](#)

NET ENROLMENT RATE

Secondary School

86.47%

Both sexes %

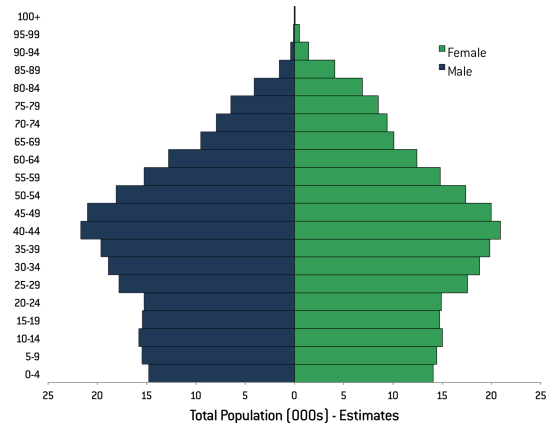
84.74% **88.29%**

Male % Female %

Year: 2011

Source: [UNESCO](#)

POPULATION BY AGE AND SEX 2010



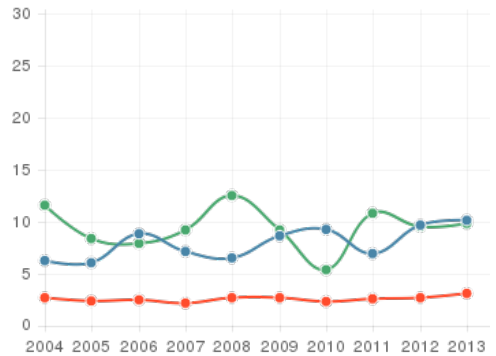
LUX

Source: [United Nations - Department of Economic and Social Affairs - Population Division](#)

2012 Revision - Estimates. (Accessed August 2013).

YOUTH UNEMPLOYMENT

Share of labour force aged 15-24 available and seeking employment



SITUATION OF YOUNG PEOPLE

PREVALENCE OF HIV

--

Male (15-24) %

--

Female (15-24) %

Year: No data.

Source: [World Bank](#)

TOBACCO USE

Consumed any smokeless or smoking tobacco product at least once 30 days prior to the survey.

--

Both sexes (13-15) %

-- --
Male (13-15) % Female (13-15) %

Year: No data.

Source: [WHO](#)

POLICY & LEGISLATION

The **Youth Law (2008)** has 10 objectives, which include education, personal, social and professional development, equal opportunities, encouraging creativity and initiative, and promoting non-formal education.

The Youth Law operates under the principles that every young person has the right to the full development of his personality, and that any application of the law should be in the best interests of young people.

Under Article 15 of the Youth Law, the **Youth Pact 2012-2014** sets out a series of new policy actions developed by the various ministries in charge of youth issues.

The Pact has five areas of action:

Is there a national youth policy?

YES

Luxembourg has a [youth law](#), a [youth report](#) and a [youth pact](#). A [2012 briefing](#) provides context.

male - (15-24) female - (15-24) total labour force

Source: [World Bank](#)

Gaps indicate missing data from the original data source. (Accessed August 2013).

BUDGET & SPENDING

What is the budget allocated to the governmental authority (ministry, department or office) that is primarily responsible for youth and/or

GDP PER CAPITA

USD 110697.03

Year: 2013

Source: [World Bank](#)

HDI

0.875

Year: 2013

Source: [UNDP](#)

21 out of 187 countries.

GINI

--

Year: No data.

Source: [World Bank](#)

CORRUPTION PERCEPTION

82

9 out of 177 countries.

Year: 2014

Source: [Transparency International](#)

PRESS FREEDOM

6.7

4 out of 180 countries.

Year: 2013

Source: [Reporters Without Borders](#)

- Transition from school to work;
- Successful start in adult life;
- Well-being of young people;
- Youth as actors;
- Scientific support of the youth policy.

PUBLIC INSTITUTIONS

The [National Youth Service \(NYS\)](#) sits within the purview of the [Ministry of National Education, Children and Youth](#). The NYS, established in 1964, has mandated objectives laid out in the [Youth Law](#) (2008). The NYS works in four areas: Supporting youth programs; running youth centres; Facilitating the transition to work; and promoting quality development in organisations that work with and for young people.

Is there a governmental authority (ministry, department or office) that is primarily responsible for youth?

YES

YOUTH AND REPRESENTATION

The [General Youth Conference of Luxembourg \(CGJL\)](#), founded in 1960, is an umbrella organisation of 29 youth groups including political organisations, trade unions, and socio-educational, and leisure organisations.

CGJL projects aim to develop the skills of young people in the areas of participation, non-formal education and active citizenship. The projects also aim to create a platform for young people to express themselves and participate in decision-making processes at the national and European level.

Does the country have a national youth organisation / association (council, platform, body)?

YES

BUDGET & SPENDING

The [Draft Budget 2014 – Volume I: The Budget Revenue and Expenditure of the State](#) allocates EUR 10.4 million (USD 14.3 million) to the [National Youth Service](#) through the [Ministry of National Education, Children and Youth](#). As reported by [Chronicle.lu](#) on 1 April 2014, the budget has been approved by the Eurogroup, but at the time of writing an updated final budget document had not been published. According to the [World Bank](#), Luxembourg spent 9.82% of its government expenditure and 3.75% of its GDP on education provision in 2001.

What is the budget allocated to the governmental authority (ministry, department or office) that is primarily responsible for youth and/or youth programming?

EUR 10.4 MILLION
USD 14.3 MILLION

youth programming?

EUR 10.4 MILLION

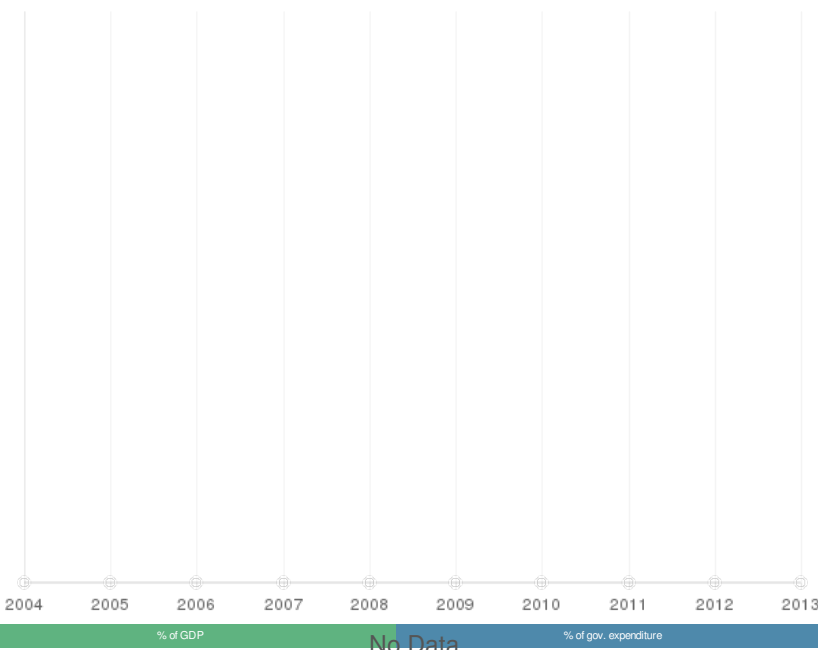
USD 14.3 MILLION

The [Draft Budget 2014 – Volume I: The Budget Revenue and Expenditure of the State](#) allocates EUR 10.4 million (USD 14.3 million) to the [National Youth Service](#) through the [Ministry of National Education, Children and Youth](#). As reported by [Chronicle.lu](#) on 1 April 2014, the budget has been approved by the Eurogroup, but at the time of writing an updated final budget document had not been published. According to the [World Bank](#), Luxembourg spent 9.82% of its government expenditure and 3.75% of its GDP on education provision in 2001.

TOTAL EXPENDITURE ON EDUCATION AS A PERCENTAGE OF GOVERNMENT SPENDING AND GDP

No Data

TOTAL EXPENDITURE ON EDUCATION AS A PERCENTAGE OF GOVERNMENT SPENDING AND GDP



Source: [World Bank](#)
Gaps indicate missing data from the original data source. (Accessed August 2013).

% of GDP

% of gov. expenditure

Source: [World Bank](#)
Gaps indicate missing data from the original data source. (Accessed August 2013).

PUBLICATIONS AND REVIEWS

Visit our library for further reading:
[Documents about Luxembourg](#)