

# Factsheet: Czech Republic

Last update: 23 October 2014

## DEFINITION OF YOUTH

The national youth policy refers to youth as between 15 - 30 years of age.

### CANDIDACY AGE

**Lower House** **21**

Source: [Inter-Parliamentary Union](#)

**Upper House** **40**

Source: [Inter-Parliamentary Union](#)

### MARRIAGEABLE AGE

	Without Parental Consent	With Parental Consent	Same Sex
<b>Opposite Sex</b>			
Male	18	16	++
Female	18	16	++

Civil unions/partnerships legal. Source: [UNSD, ILGA](#)

### VOTING AGE

**18**

Source: [Inter-Parliamentary Union](#)

### MAJORITY AGE

**18**

Source: [Act of the Czech Republic No. 94/1963 Sb. on Family](#)

### CRIMINAL RESPONSIBILITY

**15**

Minimum Age  
Source: [Zdene?k Karabec, Jir?? Vlach et al. \(2011\)](#)

### GDP PER CAPITA

**USD 19844.76**

Year: 2013

Source: [World Bank](#)

### HDI

**0.873**

Year: 2013

Source: [UNDP](#)  
28 out of 187 countries.

### GINI

**26.39**

Year: 2011

Source: [World Bank](#)

### CORRUPTION PERCEPTION

**51**

53 out of 177 countries.  
Year: 2014

Source: [Transparency International](#)

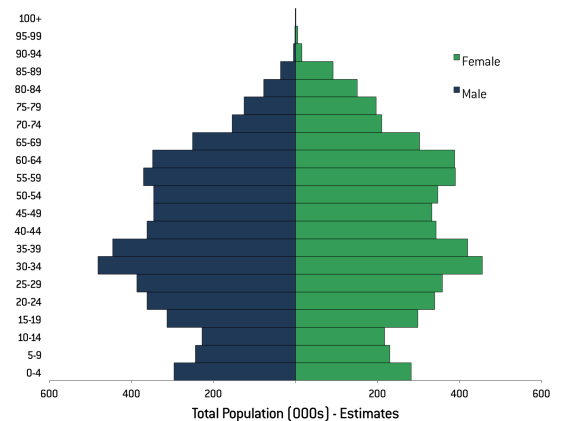
### PRESS FREEDOM

**10.07**

13 out of 180 countries.  
Year: 2013

Source: [Reporters Without Borders](#)

## POPULATION BY AGE AND SEX 2010



CZE

Source: [United Nations - Department of Economic and Social Affairs - Population Division](#)

2012 Revision - Estimates. (Accessed August 2013).

## SITUATION OF YOUNG PEOPLE

### YOUTH DEVELOPMENT INDEX

**0.73**

31 out of 170 countries.

Year: 2013

Source: [Commonwealth Youth Programme](#)

### LITERACY RATES

--

Both sexes (15-24) %

Male (15-24) % Female (15-24) %

Year: No data.

Source: [UNESCO](#)

### NET ENROLMENT RATE

Secondary School

--

Both sexes %

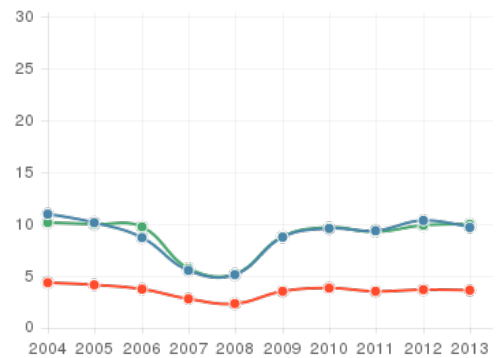
Male % Female %

Year: No data.

Source: [UNESCO](#)

## YOUTH UNEMPLOYMENT

### Share of labour force aged 15-24 available and seeking employment



male - (15-24) female - (15-24) total labour force

Source: [World Bank](#)

Gaps indicate missing data from the original data source. (Accessed August 2013).

## SITUATION OF YOUNG PEOPLE

### PREVALENCE OF HIV

**0.1%**

Male (15-24) %

**0.1%**

Female (15-24) %

Year: 2013

Source: [World Bank](#)

### TOBACCO USE

Consumed any smokeless or smoking tobacco product at least once 30 days prior to the survey.

**35.00%**

Both sexes (13-15) %

35.80%

Male (13-15) %

34.10%

Female (13-15) %

Year: 2010

Source: [WHO](#)

## POLICY & LEGISLATION

The national youth policy identifies key youth issues including: leisure, education, alcoholism and drug use, the media, politics and public life. The document then outlines actions for each government ministry in response. According to the [National report: First cooperation cycle of the EU Youth Strategy 2010-2012](#), the national youth policy is implemented through two-year Action Plans that are evaluated and incorporated into the next Action Plan. The 2012-2013 Action Plan was linked to the European Youth Strategy and was formulated through a new Youth Chamber, consisting of "representatives of NGOs, school leisure facilities, some ministries and regions and experts in children and youth issues." As an advisory body it is responsible for "drafting, implementing and evaluating current and future youth policies of the Czech Republic."

### Is there a national youth policy?

**YES**

The national youth policy was adopted in 2007. Briefings from 2012 and 2010 are available.

## PUBLIC INSTITUTIONS

What is the budget allocated to the governmental authority (ministry, department or office) that is primarily responsible for youth and/or

The [Ministry of Education, Youth and Sports](#) (MoEYS) oversees education, social programs, sports and youth, research & development and EU and international affairs. According to the [National report: First cooperation cycle of the EU Youth Strategy 2010-2012](#), an inter-ministerial working group was established to coordinate implementation across government departments. Additionally, the [National Institute for Children and Youth](#), which is fully financed and accountable to the MoEYS, is responsible for conducting research on youth, and employs professional researchers.

Is there a governmental authority (ministry, department or office) that is primarily responsible for youth?

**YES**

youth programming?

**UNCLEAR**

According to [State Budget 2014-2016](#), of Education, Youth and Sports was CZK 140 billion. In 2014 and 2015, it will be CZK 122 billion and in 2016 CZK 123 billion. According to the [World Bank](#), the Czech Republic spent 9.67% of its government expenditure and 4.24% of its GDP on education provision in 2010. However, it is unclear how much is allocated specifically for youth.

## YOUTH AND REPRESENTATION

The [Czech Council of Children and Youth](#) (CRDM) is the national youth council of the Czech Republic with 99 member organisations, representing 200,000 individual members. Its mission is to, "promote a quality life and development of children and young people." Since 2012, CRDM has been a member of the [European Youth Forum](#), which describes it as, "the only youth council in the country and has proven itself inclusive towards all main democratic youth movements."

Does the country have a national youth organisation / association (council, platform, body)?

**YES**

## BUDGET & SPENDING

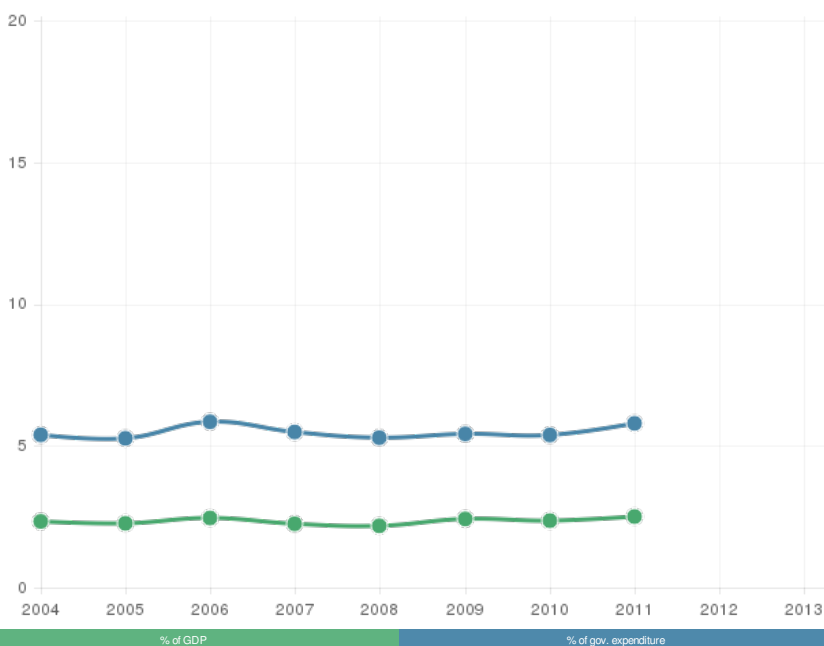
According to [State Budget 2014-2016](#), of Education, Youth and Sports was CZK 140 billion. In 2014 and 2015, it will be CZK 122 billion and in 2016 CZK 123 billion. According to the [World Bank](#), the Czech Republic spent 9.67% of its government expenditure and 4.24% of its GDP on education provision in 2010. However, it is unclear how much is allocated specifically for youth.

What is the budget allocated to the governmental authority (ministry, department or office) that is primarily responsible for youth and/or youth programming?

**UNCLEAR**

## TOTAL EXPENDITURE ON EDUCATION AS A PERCENTAGE OF GOVERNMENT SPENDING AND GDP

## TOTAL EXPENDITURE ON EDUCATION AS A PERCENTAGE OF GOVERNMENT SPENDING AND GDP



Source: [World Bank](#)  
Gaps indicate missing data from the original data source. (Accessed August 2013).

% of GDP

% of gov. expenditure

Source: [World Bank](#)  
Gaps indicate missing data from the original data source. (Accessed August 2013).

## PUBLICATIONS AND REVIEWS

Visit our library for further reading:  
[Documents about Czech Republic](#)