

# Factsheet: Serbia

Last update: 4 June 2014

## DEFINITION OF YOUTH

The **Youth Law** (2011) defines youth in Serbia as 15-30 years.

### CANDIDACY AGE

**Lower House** **18**

Source: [Inter-Parliamentary Union](#)

**Upper House** **--**

Source: [Inter-Parliamentary Union](#)  
Unicameral.

### MARRIAGEABLE AGE

	Without Parental Consent	Opposite Sex With Parental Consent	Same Sex
Male	18	16	--
Female	18	16	--

No specific legislation for same-sex marriage. Source: [UNSD, ILGA](#)

### VOTING AGE

**18**

Source: [Inter-Parliamentary Union](#)

### MAJORITY AGE

**18**

Source: [Charter on Human and Minority Rights and Civil Liberties](#) (2003)

### CRIMINAL RESPONSIBILITY

**14**

Minimum Age  
Source: [Criminal Code of Serbia](#) (2005)

### GDP PER CAPITA

**USD 6353.96**

Year: 2013

Source: [World Bank](#)

### HDI

**0.769**

Year: 2013

Source: [UNDP](#)  
77 out of 187 countries.

### GINI

**29.65**

Year: 2010

Source: [World Bank](#)

### CORRUPTION PERCEPTION

**41**

78 out of 177 countries.  
Year: 2014

Source: [Transparency International](#)

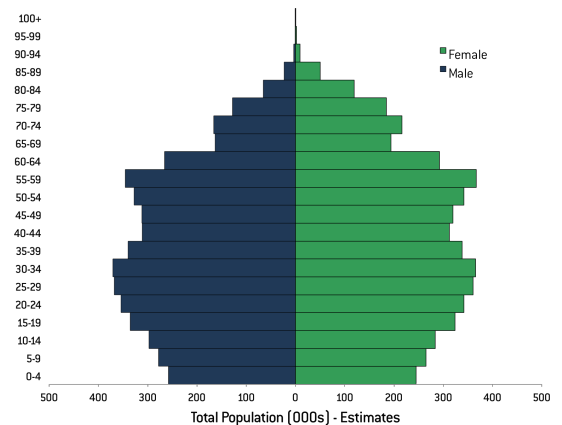
### PRESS FREEDOM

**25.05**

54 out of 180 countries.  
Year: 2013

Source: [Reporters Without Borders](#)

## POPULATION BY AGE AND SEX 2010



## SITUATION OF YOUNG PEOPLE

### YOUTH DEVELOPMENT INDEX

**0.7**

55 out of 170 countries.

Year: 2013

Source: [Commonwealth Youth Programme](#)

### LITERACY RATES

**98.50%**

Both sexes (15-24) %

**98.59%** **98.40%**

Male (15-24) % Female (15-24) %

Year: 2015

Source: [UNESCO](#)

### NET ENROLMENT RATE

Secondary School

**90.44%**

Both sexes %

**89.56%** **91.37%**

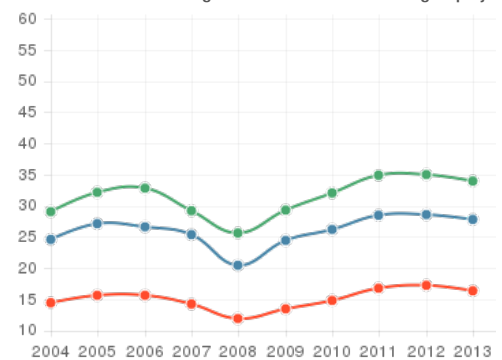
Male % Female %

Year: 2012

Source: [UNESCO](#)

## YOUTH UNEMPLOYMENT

### Share of labour force aged 15-24 available and seeking employment



## SITUATION OF YOUNG PEOPLE

### PREVALENCE OF HIV

**0.1%**

Male (15-24) %

**0.1%**

Female (15-24) %

Year: 2013

Source: [World Bank](#)

### TOBACCO USE

Consumed any smokeless or smoking tobacco product at least once 30 days prior to the survey.

**10.40%**

Both sexes (13-15) %

**10.80%**

Male (13-15) %

**9.60%**

Female (13-15) %

Year: 2010

Source: [WHO](#)

## POLICY & LEGISLATION

The **Youth Law** (2011) regulated activities involving young people, their needs and interests.

The **National Youth Strategy** (2008) is,

[...] the first step towards a systematic solution to the problem of youth status and... [supporting] young people in different spheres of social life... The Strategy should determine the attitude of the state towards young people, a possible role of youth in society, and the modes of establishing a partnership relation.

The strategy identifies opportunities, responsibilities, and institutional mechanisms for youth.

### Is there a national youth policy?

**YES**

Serbia has a youth law, a youth strategy, an action plan and guidelines. Two reviews: 2011, 2012.

### male - (15-24)

### female - (15-24)

### total labour force

Source: [World Bank](#)

## BUDGET & SPENDING

What is the budget allocated to the governmental authority (ministry, department or office) that is primarily responsible for youth and/or youth programming?

The strategy is supported by the [Action Plan for the Implementation of the National Youth Strategy 2009-2014](#) and by [guidelines for implementation at the local level \(2012\)](#).

Consultations are currently being conducted as part of a process to amend the Youth Law.

## PUBLIC INSTITUTIONS

The [Department of Youth](#) within the [Ministry of Youth and Sport](#) has responsibility for youth affairs and policy in Serbia.

The Department of Youth works in several areas, including: the development and implementation of youth policy, strategy and programs; encouraging youth participation; supporting volunteering; cooperation with youth organisations; supporting youth groups and events national and internationally; monitoring the role of young people in Serbia; promoting the development of youth policy, offices and work at the regional and local level.

Is there a governmental authority (ministry, department or office) that is primarily responsible for youth?

**YES**

## YOUTH AND REPRESENTATION

The [Serbian Youth Umbrella Organisation \(KOMS\)](#) is,

[...] the highest representative body of the young people in Serbia whose mission is to represent the interests of young people by developing a partnership with the state, inter-agency and international cooperation, encouraging the active participation of young people and organizational development of its members.

Does the country have a national youth organisation / association (council, platform, body)?

**YES**

Projects have included mobilising youth votes, training on youth policy & advocacy, awareness campaigns, youth research and participation at events. KOMS is a member of the [European Youth Forum](#).

## BUDGET & SPENDING

In the [Revised Memorandum on Budget and Economic and Fiscal Policy for 2011 with Forecasts for 2012 and 2013 \(2010\)](#), the [Ministry of Finance](#) projected a budget of RSD 4.5 billion (USD 53.6 million) for the [Ministry of Youth and Sports](#) in 2013. No documentation on the specific budget for youth in Serbia could be found online. According to the [World Bank](#), Serbia spent 10.62% of its government expenditure and 4.82% of its GDP on education provision in 2011.

What is the budget allocated to the governmental authority (ministry, department or office) that is primarily responsible for youth and/or youth programming?

**UNCLEAR**

**UNCLEAR**

In the [Revised Memorandum on Budget and Economic and Fiscal Policy for 2011 with Forecasts for 2012 and 2013 \(2010\)](#), the [Ministry of Finance](#) projected a budget of RSD 4.5 billion (USD 53.6 million) for the [Ministry of Youth and Sports](#) in 2013. No documentation on the specific budget for youth in Serbia could be found online. According to the [World Bank](#), Serbia spent 10.62% of its government expenditure and 4.82% of its GDP on education provision in 2011.

## TOTAL EXPENDITURE ON EDUCATION AS A PERCENTAGE OF GOVERNMENT SPENDING AND GDP

No Data

% of GDP

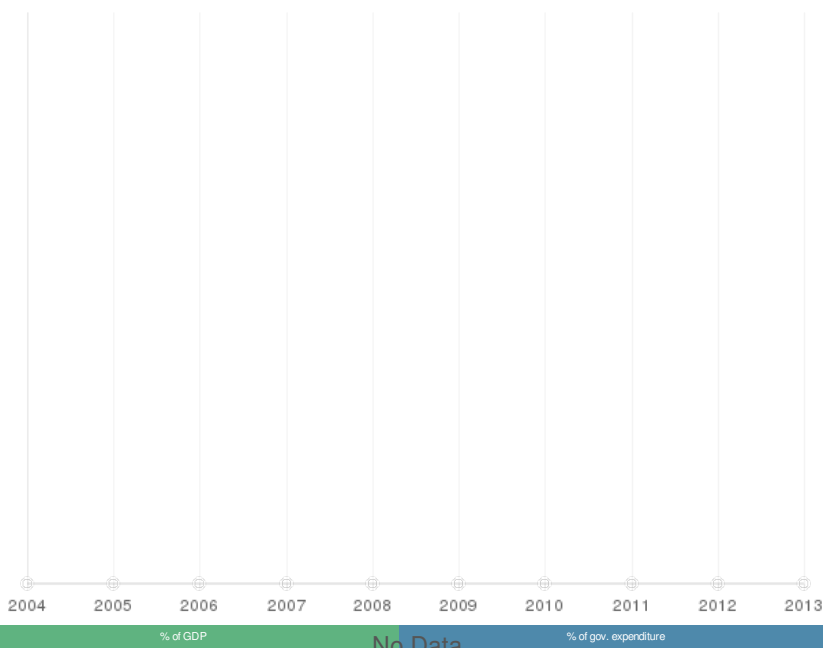
% of gov. expenditure

Source: [World Bank](#)

## PUBLICATIONS AND REVIEWS

Visit our library for further reading:  
[Documents about Serbia](#)

## TOTAL EXPENDITURE ON EDUCATION AS A PERCENTAGE OF GOVERNMENT SPENDING AND GDP



Source: [World Bank](#)